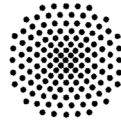
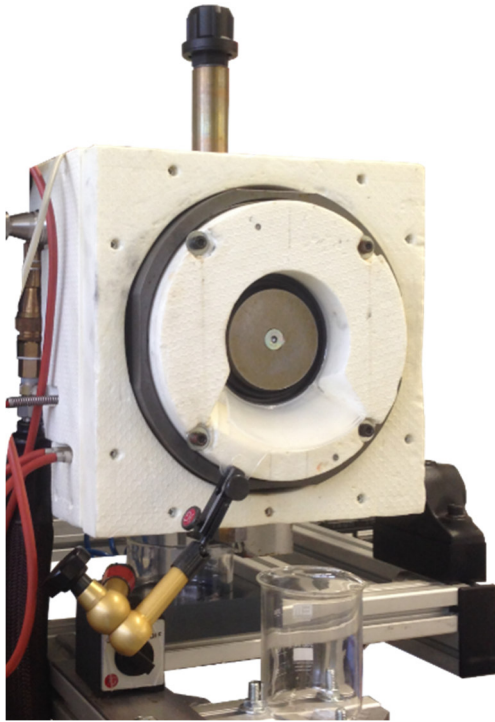


Low-Temperature Shaft Seal Test Bench

IMA-TechSheet #101050 V1



Universität Stuttgart
Institut für Maschinenelemente



Low-temperature test bench

Description:

- Endurance test bench with two test chambers
- Speeds up to $\pm 7.500 \text{ min}^{-1}$
- Temperature control from -80°C to 140°C
- Operation with and without external freezing
- Operation with oil sump
- Load spectrum freely adjustable

Technical Specifications:

Spindle speed:	max. 7.500	1/min
Sump temperature:	-60 ... 140	$^\circ\text{C}$
Shaft diameter:	up to 150	mm
Pressurization:	bis 5	bar

Field of Application:

- Leakage and wear measurements
- Temperature measurements
- Hydraulic conveyance measurements
- Tests on grease sealing possible



Operation with freezing



Operation without freezing